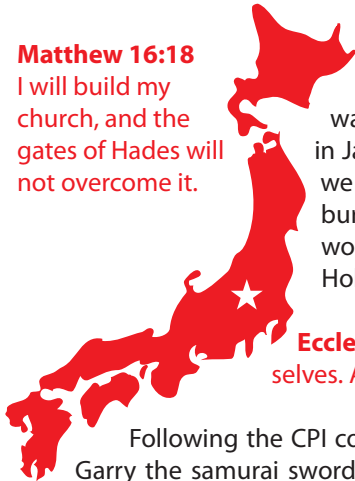


Matthew 16:18
I will build my church, and the gates of Hades will not overcome it.



Rebuilding A Christian Nation

This month we attended Japan's largest church planting conference. It was a great time to reconnect with many of our missionary friends serving in Japan and also a time of learning and refreshing. The biggest thing that we got from attending is, "Don't try to do ministry alone." In order to avoid burnout and encourage participation by Japanese believers, sharing the workload is best. No individual should build the church by himself. It is the Holy Spirit who calls and equips us to serve Him through His strength.

Ecclesiastes 4:12 Though one may be overpowered, two can defend themselves. A cord of three strands is not quickly broken.

Following the CPI conference, we visited with Shimanuki-san, the Japanese fellow that gave Garry the samurai swords in 2007. Regarding our mission work, he said he doesn't believe that Japanese people can become fully Christian because Japan is a Buddhist nation. "Christianity is great for America, but Buddhism is great for Japan," he said. He suggested we steer clear of religious matters to avoid straining our friendship. Sadly, many Japanese share a similar sentiment. All the more important that the light of Christ be seen in us in order to spread the Gospel message. Shimanuki-san said he would like to visit us in the spring at our place in Karuizawa. Pray that Christ's light would shine through us and that Shimanuki might see the source of the hope we have.



Julina and Aaron get into character at a local photo booth.

Luke 11:33 No one lights a lamp and puts it in a place where it will be hidden, or under a bowl. Instead he puts it on its stand, so that those who come in may see the light.

Listen to the Karuizawa Illuminations Christmas carolers who sang during the holiday season kickoff.



Watch the Karuizawa Junior Choir perform several songs during a recent show at Ohga Hall.



Our good friend Erika-chan raised her hand during an invitation to accept Jesus. Praise God!



English students at SYME were recognized for their progress since summer. Many believe in Christ.



Garry, Joshua Bengtson, and Rusty Carney take shots at the landscape around Lake Ashi in Hakone.

Want to see bigger photos plus video? Click these images in our digital newsletter to view online.



Keiko and her mom are wonderful Christian women and are great Japanese language partners.

DID YOU KNOW? わかりましたか。

Prior to the unification of its feudal system, Japan was well on its way to becoming a Christian nation. In fact, 200 years ago there were over 1 million believers. The majority were martyred. Today Christianity is starting to take even greater strides thanks in part to the religious freedom treaty put in place following WWII.

With little more than 1 million followers of Christ in modern Japan, new college graduates will stray from their faith unless they connect with a church focused on discipleship or small group ministry.

When you buy a loaf of bread in Japan, the heels have already been removed. You can buy bread with the crusts already cut off too.



We are happy to attend weekend service at Horizon Chapel where our kids normally have school.



The Tokyo team [Phil Kornegay, Corey Shields, Tim Turner, Garry Weiling, Aaron Ellissa, Tomo Shields, Julina, Skyler Shields, Christian Kornegay, Nicki Shields, and Kim Kornegay] gather in front of Mount Fuji during the CPI church planting conference in Hakone.

Prayer Needs

Anyone who doesn't believe in angels obviously hasn't driven with Garry through Tokyo. It's only by God's grace that we've avoided any incidents - though there have been a few close calls.

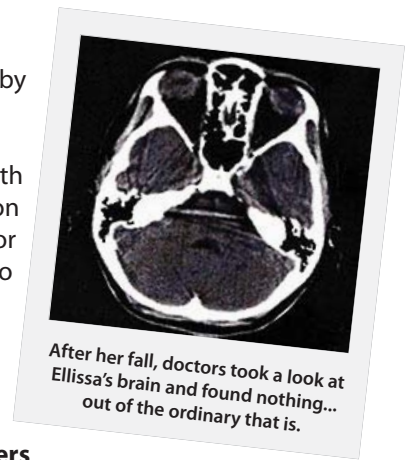
The value of the US Dollar is currently at a 14-year low compared to the Japanese Yen. Coupled with a sharp decrease in church giving, this equates to a 15% cost of living increase for us! Please petition God to continue to sustain us by connecting us with additional supporters who have a burden for Japan's salvation. Pray also for those workers here who have to return to their home countries to raise additional support.

Cards and care packages may be mailed to us in Japan:

Weiling and Garry Kline
 1197 Karuizawa-machi
 Kitasaku-gun, Nagano-ken
 389-0102 Japan



Add us as a friend on FACEBOOK
Weiling@JapanActs.com
Garry@JapanActs.com



After her fall, doctors took a look at Ellissa's brain and found nothing... out of the ordinary that is.

Money Matters

Nov Contributions: +\$3,295.58
 Nov Expenses: -\$8,042.25
 See expense report for more details.



From Team Expansion's President Doug Lucas

Recently, Team Expansion called together all of its team leaders throughout the world. They all met at Emerald Hills, our missions nerve center in Louisville, Kentucky. For four days they dreamed, planned, reported, brainstormed, coached, and re-cast vision. This every-other-year Team Leader's Summit is one of the most important things we do. It was an exciting event, with some 50 current and future team leaders coming alongside 20 mentors and coaches. It was stupendous, but it's just one of the many ways we leverage every worker. Through this and many other forms of training, coaching, and accountability, we are demonstrating that we yearn to get better. No wonder you care about your favorite Team Expansion missionary. They're led by a top-notch, well-trained team leader.

Thank you for investing in our future and thank you for supporting the work of Team Expansion.



Help Us Proclaim His Name!

You can support God's ministry in Japan by:

- Committing to monthly support of: \$_____
- Sending a special gift of \$_____
- Becoming a prayer partner with the Klines

Name _____ Church _____

Address _____ City _____ State ____ Zip _____

Phone _____ Email _____



Several hundred missionaries participated in this year's CPI event.



Ellisa met her new friend Lily at CPI as a volunteer for the kid's ministry.

Return with a check to: Team Expansion 2401 The Oaks Blvd Kissimmee, FL 34746